

EUROBIKE
CYCLING FUN IN EUROPE



© Harbour Copenhagen

★★★★★ (4)

Zealand Loop Tour

DISCOVER SOUTH ZEALAND AND COPENHAGEN.

Let yourself be enchanted by the Danish Zealand on this cycle tour. Copenhagen offers many possibilities to enjoy tasty food, to go for a stroll and to discover the town.

Medium



8 Days / 7 Nights



Self-guided Tour

To the online version



Itinerary

DAY

1

Arrival in Køge

DAY

2

Køge – Naestved | approx. 60 km

Today's stretch takes you through Zealand's green South to one of the island's oldest towns on the West coast, Naestved. Take an excursion to the castle of Gavnø. There are over ½ million bulbs, a rose garden, and many rare plants and trees on the castle grounds. You may want to visit the theme park, "Bonbon Land" or the glass factory nearby.

DAY

3

Naestved – Sorø/Ringsted | approx. 50-60 km

Today your journey takes you further northwest through the landscape of the Great Belt. Beautiful beaches and dune landscapes characterize the picture around the vacation and fishing village Kaerebaeksminde. Wonderful atmospheres with bathing life, camping, restaurants and cafes can be experienced here. The fishing and town museum will guide you through the history of the village. Art galleries with changing exhibitions can be found in Kaerebaekstorp. The journey then continues inland to your next stop in the interior.

DAY

4

Sorø/Ringsted – Roskilde | approx. 45-65 km

Your cycling tour leads you to the coast and fjords at Roskilde today. First, Iselfjord, then Roskildefjord. The tombs of many Danish kings and queens are found in the Roskilde Cathedral. If you like, follow the Vikings as you row or sail across the fjord in a Viking replica.

DAY
5*Roskilde – Copenhagen* | approx. 45 km

Today's stretch, the last stretch of your tour, is a little shorter and takes you back to the capital. Spend the afternoon in a quaint café or visit the Tivoli Gardens. Hand in your rental bike and enjoy your evening. Overnight in Copenhagen.

DAY
6*Copenhagen*

Today belongs to Copenhagen and its sights. Discover the Danish capital by bike, which is certainly the No. 1 means of transport here and has an excellent network of bike paths. If you don't want to cycle, take a stroll to Nyhavn to the Little Mermaid and walk along the Stroget shopping street or visit the legendary Tivoli amusement park.

DAY
7*Copenhagen – Køge* | approx. 45-55 km

Cycle south along the beaches of Copenhagen and continue on the Berlin- Copenhagen Cycle Route to the small town of Køge. A beautiful Medieval market square and Denmark's oldest court house await you there. Enjoy the nearby white sand beach and take time for daydreaming or a refreshing swim. Overnight in or near Køge.

DAY
8*Departure or extension*

After breakfast you will travel home. On request we are happy to book an extra night in Køge.

Tour character

The route is generally flat, though slightly hilly in places. The terrain has an overall height difference of roughly 150m.



Prices and events

Place of arrival: Koge

	Season 1 03.06.2023 - 09.06.2023 20.08.2023 - 26.08.2023 arrival saturday	Season 2 10.06.2023 - 19.08.2023 arrival saturday
Great Lakeland Loop Tour, 8 days, arrival Koge, DK-DKRKG-08X		
Base price	89900	97900
Surcharge single room	400.00	400.00

Category: 2**, 3*** and 4****- Hotels and guesthouses

Additional nights

Place of arrival: Koge

	Season 1 Jun 3, 2023 - Jun 9, 2023 Aug 20, 2023 - Aug 26, 2023 arrival saturday	Season 2 Jun 10, 2023 - Aug 19, 2023 arrival saturday
Koge		
Double room p. P.	9500	9500
Surcharge single room	5500	5500

Our rental bikes

Filter

8-gear unisex	90.00
8-gear gents	90.00

24-Gear-Unisex	90.00
24-gear gents	90.00
Electric bike	190.00

Prices per person in EUR

Services and infos

Services

Included:

- Accommodation as already mentioned
- Breakfast
- Luggage transfer
- Detailed travel documents 1x per room (German, English)
- GPS-data is available
- Service hotline

Infos

Arrival / Parking / Departure:

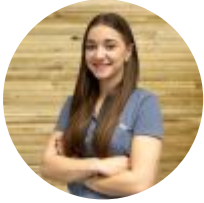
- Køge train station
- Copenhagen airport
- Free public parking in Køge, no reservation possible

Things to note:

- Tourist tax, if due, is not included in the price!
- Further important information according to the package travel law can be found [here!](#)

Contact & booking

Do you still have questions about the tour? We are happy to help and look forward to your inquiry.



Elena Pötzelsberger, Travel specialist



+43 6219 60866 135



e.poetzelsberger@eurobike.at

Book now

