



# Mainz - Koblenz, MS Olympia

## LEGENDARY RHINE RIVER

Your voyage through the most beautiful wine-growing areas alongside the Rhine River begins in Mainz. From here, past gorgeous vineyards and mystic castle ruins, your ship sails to Koblenz. On board the ship, the MS Olympia, as well as on your bike tours, you pass through the UNESCO World Heritage Site of the Middle Rhine Valley with its picturesque small towns, coloured half-timbered houses and legendary castles. Short cycle tours through the idyllic landscape and plenty of time to discover each town make this journey a special event for beginners and for people who enjoy pleasure.

- Get all information and many more tour tips for our tours with [Bike & Boat in Germany](#).

### Easy



8 Days / 7 Nights



Self-guided Tour



Mindestteilnehmerzahl: 75

### To the online version



# Itinerary

DAY  
1

## *Arrival in Mainz*

Individual arrival in Mainz and embarkation from 3.00pm-5.00pm. On the ship, you will be welcomed by your captain and crew and the tour management

---

DAY  
2

## *Mainz - Nierstein - Worms* | approx. 20 km

A short leg of the journey with lots of time to indulge: directly alongside the Rhine, you cycle on the well-paved Rhine Cycle Route to Nierstein. With almost 1000 hectares of vineyard surface area, Nierstein is the biggest wine-growing municipality on the Rhine. You may also visit the historic Old Town with its medieval market square and the noble houses. In the afternoon, enjoy the boat tour from Nierstein to Worms.

---

DAY  
3

## *Worms - Nierstein - Mainz* | approx. 20 km

Start off for today's cycle tour in Worms, the city of the Nibelungs. On an extensive cycle tour alongside the bank of the Rhine River, you will have again the possibility to fall for the charms of the vineyards and to enjoy the varied scenery of the Rhine. Today, you cycle from the south towards Nierstein, also referred to as the Riesling City. From there, your ship sets sail for Mainz.

---

DAY  
4

## *Mainz - Rudesheim* | approx. 30 km

Today the Rhine River and its surrounding area show you the reason why the Upper Middle Rhine Valley has been declared UNESCO World Heritage. Beautiful Rhine islands, steep slate cliffs and vineyards characterize the area around Rudesheim. On the bike tour, cycle past Eltville with electoral castle, and Oestrich-Winkel, whose landmark is a historic wine loading crane, to Rudesheim. Here we suggest that you visit the world-famous Drosselgasse.

---

DAY  
5*Rüdesheim - Oberwesel* | approx. 30 km

In the morning, start off from Rüdesheim by bike. Past thick forests and gorgeous vineyards, riding always alongside the Rhine, you will pass sights like the Niederwald Monument and Pfalzgrafenstein Castle, before reaching Oberwesel, today's destination

---

DAY  
6*Oberwesel - Boppard* | approx. 20 km

From Oberwesel, you start for a short cycle tour along the Rhine to Boppard. On this short trip, you come by many scenic outposts from where you have the possibility to enjoy the varied landscape. From the bank of the river, the many fortresses and the legendary Loreley cliff offer a picturesque backdrop all along the way

---

DAY  
7*Boppard - Koblenz* | approx. 20 km

Cycle from Boppard to Koblenz, today's destination. Here the Moselle River joins the Rhine. One last time, cycle past impressive buildings like the Marksburg Castle in Braubach and Stolzenfels Castle. Let the day come to an end at the Deutsche Eck, the German Corner, or ride to the Ehrenbreitstein Fortress and enjoy the fantastic panoramic view over the city of Koblenz

---

DAY  
8*Departure*

After breakfast, disembarkation until 09:00 am.

---

# *Tour character*

Most of the stretches are paved or as-phalted, and lead alongside the Rhine dikes with-out any gradients of note.  
Nearly all cycle tours canbe classified as being easy.

# Prices and events

Place of arrival: Mainz

## Season 1

05.08.2023 |

### Bike & Boat Along the river Rhine - Mainz - Koblenz, main deck, MS Olympia, 8 days, DE-RHSME-08-H

Base price 949.00

2-bed-cabin single use 300.00

### Bike & Boat Along the river Rhine - Mainz - Koblenz, upper deck, MS Olympia, 8 days, DE-RHSME-08-O

Base price 1,149.00

Discount 2-bed-cabin  
astern -50.00

Surcharge 1-bed cabin 150.00

2-bed-cabin single use 50%

# Our rental bikes

*Filter*

7-gear with back brake 79.00

7-gear with freewheel 79.00

Electric bike with freewheel 189.00

E-Bike with back brake 189.00

Prices per person in EUR

# Services and infos

## Leistungen

### Included:

- Program according to tour itinerary
- 7 overnight stays in cabins with shower/toilet in the booked cabin category
- Full board: 7x breakfast buffet, 6x lunch package for bike tours or lunch snack, 6x coffee and cake in the afternoon, 7x 3- or 4-course-dinner
- Welcome drink
- Daily cleaning of cabins
- Linen and change of towels if required
- All harbour, bridge and lock fees
- Daily briefing of bike tours on board
- 1 route book for self-guided tours
- GPS-Tracks
- Tour representative on board

## Infos

### Arrival / Parking / Departure:

- Car Park at the central station (unguarded, cannot be booked in advance) in Mainz. Parking fee approx. € 10,-per day.
- Return trips to Koblenz: By train in 2 hours for approx. € 25,- (bookable on site).

### Notes:

- Further important information according to the package travel law and additional information about your bike and boat trip can be found [here!](#) .

# *Your Boat*



## *MS Olympia*

Comfortable and cosy river ship with family environment. The ship was refurbished in 2015/2016.

***Beds:*** 96

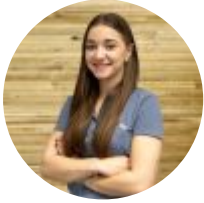
***Crew:*** 21

***Length:*** 88,50

***Width:*** 10,50

# Contact & booking

Do you still have questions about the tour? We are happy to help and look forward to your inquiry.



**Elena Pötzelsberger, Travel specialist**



+43 6219 60866 135



e.poetzelsberger@eurobike.at

**Book now**

